

In This Issue

Grontmij Ranked Third in Europe	2
Double Vision	3
Focus on Sustainable Energy	4-5
Innovative Stabilisation Works Keep Project on Track	6
Grontmij is 'Best in Class' for Health and Safety	7
A New Online Era	8



WELCOME



Welcome to the latest issue of Dialogue, the newsletter from Grontmij.

The focus of this issue is sustainable energy. The expertise that Grontmij has in this area is unrivalled in Europe and covers both new and emerging renewable technologies. Recent appointments on Rødsand II offshore wind farm and Griffin onshore wind farm in Perthshire demonstrate our strength in this area. This is coupled with an enviable track record including involvement in nearly 200 wind energy projects to date.

Indeed sustainability as a whole, is at the core of Grontmij's business ethos. In this issue of Dialogue, Frank Price offers his opinion on the upcoming COP15 summit in Copenhagen and how engineering consultancies can play their part in mitigating the environmental impact of projects. He also discusses Grontmij's commitment to curbing carbon emissions through signing up to the 10:10 initiative.

You can also read about Grontmij's role in developing an innovative, low energy solution for treating wastewater. Our leading position within the water industry has recently received a further boost after winning a series of health and safety awards.

I hope this newsletter gives you a flavour of the many exciting developments currently taking place.

Lawrence Hughes
Managing Director - UK & Ireland

THE TOP INTERNATIONAL DESIGN FIRMS

The recognition from ENR follows Grontmij's success at the 2009 NCE/ACE awards

Grontmij Ranked Third in Europe

Engineering News Record (ENR), a leading American magazine for the engineering industry, has ranked Grontmij as the third best performing engineering consultancy in Europe.

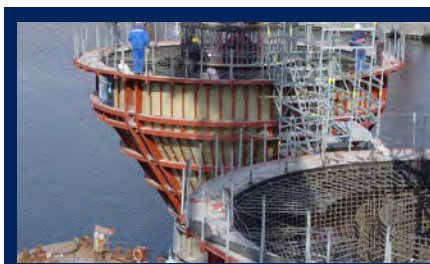
ENR ranks the world's top 200 largest international design firms based on financial and strategic information. In addition to achieving a strong position in Europe, Grontmij is listed as 24th in the world. A further breakdown reveals that Grontmij is ranked fourth in the European water and wastewater market sectors.

Having already reached second position in the 'major firm' category of the NCE/ACE awards earlier this year, the publication of the

ENR rankings provides further independent recognition of Grontmij's high standing within the industry.

Sylvo Thijsen, Grontmij CEO, comments, "We are very proud to be acknowledged as one of the world's leading engineering consultancies. Central to this success, is our ability to leverage global multi-disciplinary expertise whilst retaining a focus on our mission of being the best local service provider for engineering design and consultancy services across all the sectors in which we operate."

[E fergus.wooler@grontmij.co.uk](mailto:fergus.wooler@grontmij.co.uk)



ON THE FRONT PAGE

Foundations being constructed for the Rødsand II wind farm, for which Grontmij is the client's consultant. The foundations are manufactured on barges and then tugged to the site, circumventing the need for lifting equipment and lowering costs.

Double Vision



Oxford Brookes' new state-of-the-art campus will help attract new students

As city campus universities continue to grow either through land or building acquisition, many start to lose their sense of place and identity. This is an issue that most universities are taking very seriously as they face strong competition to attract students and their tuition fees.

Whitelaw Turkington and Roger Preston & Partners (both part of the Grontmij group) are involved in master plan projects to examine and develop new focal points or gateways for two prominent universities. The purpose is to engender a sense of arrival and community on campus, making each proposition far more attractive to potential students. This in turn represents a strong return on investment as revenue increases for universities through the attraction and retention of greater numbers of students.

Leading building services consultancy, Roger Preston & Partners, is working alongside Design Engine Architects at Oxford Brookes University to redevelop the existing Gypsy Lane Campus. A new energy centre, student centre building and school for the built environment, will serve to provide a new focal point for the campus and open and interactive spaces to encourage student and community integration. The buildings all incorporate carbon saving measures including optimised façades and enhanced natural ventilation. The outcome will be the creation of a new heart for the university and an identifiable gateway.

Award-winning landscape architect, Whitelaw Turkington, is helping the University of Leeds to create a high quality public realm. A network of connected spaces

is being developed including a new campus entrance, a central square and enhancements to the campus parkland areas. This forms an integral part of Leeds' efforts to be ranked as one of the top 50 universities in the world by 2016.

Guy Denton, managing director of Whitelaw Turkington explains, "Universities now recognise that they risk deterring potential students if they neglect the quality of external space across their campus. Examples such as Liverpool University where the campus has been transformed at a cost of £1.6m, demonstrate that relatively little investment can dramatically enhance a university's appeal for new students."

E guy.denton@wtlandscape.com
E g.palmer@preston.com

Rt Hon Hilary Benn MP Proclaims Aerated Lagoons as 'the Future'



Hilary Benn congratulates Stephen Burrows, engineer for Grontmij, who helped develop the new wastewater treatment system

Grontmij played an integral role in the delivery of the low carbon wastewater treatment works for Anglian Water earlier this year.

The plant's new Aero-Fac[®] wastewater treatment lagoon system is the first public plant of its kind in England. The scheme was developed to provide wastewater treatment for the first time for around 830 residents in the village of Sutton St. James, Lincolnshire. It has the lowest carbon footprint of all the considered alternatives and is virtually maintenance-free due to its simple but refined aeration system. The facility locks in all odours, screenings and sludge, combined with low energy operation.

To mark the opening of this £4m project, the Rt Hon Hilary Benn MP, Secretary of State for Environment, Food and Rural Affairs along with Anglian Water Chief Executive, Jonson Cox, visited the site and unveiled a barn owl box; the 100th installation site in Anglian Water's nesting box programme.

After the ceremony the Minister said, "All of us here today are looking to the future. This project is important in showing us how we can combat climate change and it has been achieved by working in partnership with customers and the local community."

E stephen.burrows@grontmij.co.uk

Focus on Sustainable Energy



In this feature, **Andy Sullivan, director of systems and sustainable energy** and **Chris Paddey, head of sustainable energy**, provide an overview of some of the latest developments in the energy sector. This includes the pioneering work being undertaken at Rødsand II offshore wind farm that has led to dramatic cost savings and progress on Griffin, a large onshore wind farm in Perthshire.



Offshore Savings



Rødsand II will meet 2% of Danish energy consumption

Construction of the 207MW offshore wind farm, Rødsand II, has now begun in Southern Denmark. Grontmij is supporting site owner, E.ON Sweden AB, by managing the design and construction of the project, which is due to be operational by 2010.

The wind farm will comprise 90 2.3MW turbines, which will meet 2% of the Danish power consumption. Grontmij's role includes the environmental impact assessment, outline design of the layout, grid connection and foundations, supervision of geotechnical works and tender assistance.

The specification of concrete gravity-based foundations has created a 30% cost saving in comparison to offshore

monopile foundation systems that are widely used in the UK. To further minimise costs, the manufacture of the foundations is undertaken on transport barges in Poland and then towed to the site, avoiding the need for heavy lifting equipment. Furthermore, a new cost effective method for the preparation of gravel beds has been developed specifically for the site.

Per Vølund, Grontmij chief advisor for wind energy says, "We have worked on such projects across Europe since the advent of offshore wind farms 15 years ago. On Rødsand II, this has enabled us to effectively meet the client's requirements whilst dramatically reducing costs."

[E jens.larsen@grontmij-carlbro.dk](mailto:jens.larsen@grontmij-carlbro.dk)

FACTS AND FIGURES

496,000

Tonnes per year of carbon dioxide that will be displaced by Rødsand II offshore wind farm

5.7%

Percentage of UK energy supply currently produced by renewables

200

Number of wind energy projects Grontmij has worked on across Europe

162,000

The number of households that Griffin wind farm will generate electricity for

Industry Insights

Chris Paddey, Grontmij's head of sustainable energy, shares his views on the UK renewables market.

What are the likely future growth areas and trends for renewables in the UK?

The major future growth area in the UK is offshore wind. I also expect growth in heat production and supply from both traditional Combined Heat and Power (CHP) and bioenergy derived fuels. Current incentive mechanisms usually ensure small, medium and large scale projects are financially viable. The introduction of feed-in tariffs and the Carbon Reduction Commitment means small to medium scale renewables projects will also flourish.

What needs to be done to ensure that the UK meets its targets for producing 15% renewable energy by 2020?

The technology, legislation and financial mechanisms are in place. Planning and grid availability are the main concerns between now and 2020 especially as renewables currently only account for 5.7% of the UK's energy mix. The newly

confirmed Infrastructure Planning Commission will have the power to make decisions on projects of strategic national importance which will help. However more needs to be done to ensure Local Authorities are proactive in helping developments succeed.

What impact has the recession had on the renewables sector?

Companies developing renewables projects on balance sheet for sound financial reasons have not been affected. Developers reliant on bank finance for project capital have suffered due to a shortage of lending during the credit crunch.

What has Grontmij brought to the renewables sector?

Grontmij is one of Europe's leading renewable energy consultants. We have a huge amount of experience in both on and offshore wind, CHP, district heating and bioenergy. We stand out in the UK as a consultant with a huge portfolio of renewables projects that have been taken to construction utilising some of the world's most advanced technologies.



The uptake of bioenergy is likely to accelerate in coming years

What advice would you give to anyone looking to enter the renewables market?

As a land owner or energy developer you can spend a considerable amount of time understanding the array of legislation, incentive mechanisms and technology types. Spending a small amount of money to undertake a pre-feasibility study at the outset can save huge amounts of time and money as the project develops.

[E chris.paddey@grontmij.co.uk](mailto:chris.paddey@grontmij.co.uk)



Griffin wind farm is due for completion in 2012

Any Way the Wind Blows

Grontmij is currently supporting Airtricity in the development of Griffin onshore wind farm in Perthshire, Scotland. This is part of a framework agreement to provide 'Call-off' Engineering Consultancy and Support Services to Scottish & Southern Energy plc (SSE), which is Airtricity's parent company.

Grontmij's involvement to date includes; design and supervision of site investigation works with geotechnical interpretation, substation platform, wind farm access and public highway improvement works, internal bridge and culvert designs and developing site welfare building options. We are also assisting with the purification of Section 36 Planning Application Conditions.

Pre-construction work is progressing where the completed wind farm will have

a capacity of up to 204MW, supplying electricity for up to 162,000 homes. The completion of the project in 2012 will be a milestone in SSE's drive to reduce the carbon impact of its electricity production by 50% by 2020 (from 2005/6 levels).

Mike Tavern, operations manager for Grontmij comments, "Work on such a large wind farm presents multi-faceted technical, legislative and programming challenges. With a track record of over 70 onshore projects across Europe, Grontmij is well placed to provide innovative, sustainable and cost-effective solutions by drawing on the breadth and depth of our expertise."

[E mike.tavern@grontmij.co.uk](mailto:mike.tavern@grontmij.co.uk)



Frank Price, director of sustainability for the Grontmij Group

The imminent COP15 climate change conference in Copenhagen will see leaders from 200 nations meeting to agree a global accord for limiting emissions.

In the light of this, Frank Price, director of sustainability for Grontmij, discusses the contribution that the engineering industry can make.

The Road to COP15

“The overall goal of the event is to establish an ambitious global climate agreement on greenhouse gas emissions for the period from 2012 when the first commitment period under the Kyoto Protocol expires. Science has moved on a lot since Kyoto and it will be these latest predictions that will be used as a backdrop to the discussions.

“We need to realise that technology will not offer a quick fix to the problems caused by climate change; what is needed is a change of mindset. Governments, businesses and individuals all need to take responsibility and make significant changes to the way they operate.

“The engineering industry has a big part to play. A case in point is the predicted change in rainfall patterns. Grontmij is using sustainable solutions such as water resource management, advanced urban drainage and optimised asset management to ensure both sustainable water provision and resilient flood protection. To drive this, the ‘Sustainability by Design’ guidelines that have been issued to all Grontmij engineers are helping us to embed innovation in whole life costs reduction, risk management and best practice solutions.”

E frank.price@grontmij.co.uk



The upgrade works took just 11 weeks to complete

Innovative Stabilisation Works Keep Project on Track

Grontmij, working for Carillion, has been instrumental in a project to stabilise a 540 metre length of track, on the busy freight line between Doncaster and Scunthorpe.

The track, underlain by soft peat and alluvium, had been suffering from settlement related problems for a number of years leading to the introduction of a 10mph speed limit.

The solution was engineered by Grontmij's Geotechnical and Transportation teams, who developed a plan to drive up to 1,300

small diameter piles through the existing railway embankment. The piles support a reinforced concrete slab, which carries new ballast and track.

Clive Powell, geotechnical director at Grontmij, said, “With limited site access, the selection of a mini pile meant that smaller scale plant could be used, which offered distinct advantages in terms of reduced temporary works, plant movement and less risk to the adjacent canal.”

Network Rail's project manager, Paul Fairburn, added, “This is a vital piece of work and we were impressed with Grontmij's geotechnical solution. The strength of the team that Carillion and Grontmij represent allowed the work to be completed on schedule with minimum disruption to the ecological environment.”

E clive.powell@grontmij.co.uk

Grontmij is 'Best in Class' for Health and Safety



Grontmij receives the 'Best Supplier Contractor' award for health and safety from RoSPA and Severn Trent Water

Grontmij has further cemented its position as a leader in health and safety standards after winning four prestigious accolades:

RoSPA / Severn Trent Water 'Best Supplier Contractor' Award

Grontmij exceeded the expectations of Severn Trent Water in receiving the 'Best Supplier Contractor' award in the first year of the competition, as well as successfully attaining gold standard status.

RoSPA Gold Medal

Grontmij has been honoured with a gold medal from the Royal Society for the Prevention of Accidents (RoSPA), for having

achieved the gold award for the fifth consecutive year.

British Safety Council International Safety Award

This award requires comprehensive health and safety policies, targeted plans and a clear commitment to health and safety. Mr Brian Nimick, BSC chief executive, stated, "Grontmij is helping to make our vision of a healthy and safe environment a reality".

Morgan Est Health & Safety Award

Grontmij engaged with strategic partner Morgan Est, supplier FP McCann and client Severn Trent Water to find a solution to the potential risk of operatives falling through

manhole openings during construction. A design was subsequently developed and a prototype has been cast. Severn Trent Water is now considering using the design in future major capital works.

Andrew Carpenter, Grontmij's director of health and safety, stated, "These awards add further credibility to Grontmij's enviable reputation as a proactive industry leader in health and safety. I am delighted that our outstanding performance in this field has been recognised by independent safety organisations and our major clients."

[E andrew.carpenter@grontmij.co.uk](mailto:andrew.carpenter@grontmij.co.uk)

Grontmij Signs up to 10:10



Grontmij has implemented a 'cycles for work' scheme to help curb emissions

Grontmij has joined the ambitious 10:10 initiative to cut 10% of carbon emissions in 2010. The 10:10 campaign has been initiated to galvanise government bodies, businesses,

schools and private individuals to take the first steps towards curbing their emissions.

Frank Price, Grontmij's director of sustainability comments, "One of the main causes of inertia in relation to climate change is the seemingly unreachable targets that have been set for reducing carbon emissions, which often makes people feel powerless. 10:10 is not only simple to understand but also achievable, which is why it's gaining momentum.

"Grontmij has introduced several internal initiatives to live up to this commitment. These include the use of video conferencing

in place of car travel, installing energy-saving screen savers and the introduction of a 'cycles for work' scheme. We will shortly be launching other measures around the use of IT, electricity and travel."

Grontmij has already signed up to the Global Reporting Initiative and the Carbon Disclosure Project; which are both recognised, independent bodies that verify the company's environmental performance.

[E frank.price@grontmij.co.uk](mailto:frank.price@grontmij.co.uk)



A New Online Era

Grontmij has now launched new websites for the UK and Ireland, signalling a new era in the consultancy's enhanced online presence. In addition, leading commercial and contract consultancy, Trett Consulting (part of the Grontmij group), has launched a new-look website, www.trett.com.

The websites combine clean design, intuitive navigation and improved functionality. This includes a showcase of the consultancy's service portfolio, a dynamic media centre and a comprehensive repository for case studies.

Pamela Weeks, head of marketing and communications for the UK & Ireland



The new websites give Grontmij a strong online presence comments, "The new websites provide a good representation of the nature and breadth of Grontmij's business activities and will allow visitors to easily access the information that they require. To ensure that we remain at the forefront of online developments, our websites will be continually updated and we will look at new ways of adding value for visitors."

To view the new Grontmij websites, please visit www.grontmij.co.uk and www.grontmij.ie

[E pamela.weeks@grontmij.co.uk](mailto:pamela.weeks@grontmij.co.uk)

CONTRACT NEWS

Clyde Gateway URC / Glasgow City Council

Grontmij has commenced remediation works on the 2014 Commonwealth Games Athlete's Village site, which has been instigated by Glasgow City Council under a geotechnical and testing framework. On an adjacent site, Grontmij is providing strategic drainage, geo-environmental and landscape architecture consultancy services, including the production of a surface water management plan as part of the South Dalrnock masterplan being created for the Clyde Gateway Urban Regeneration Company.

Commercial Bank of Qatar

Following the opening of the Commercial Bank of Qatar's headquarters building earlier this year, Roger Preston & Partners (part of the Grontmij group) has been commissioned to carry out detailed operational reviews of buildings containing business critical facilities and undertake the design of new data centres within the Bank's property portfolio. This includes facilities for the other banks within the Commercialbank Group.

Highways Agency

Grontmij is working with the Highways Agency to define the 'next generation' service for the Highways Agency Information Line (HAIL). The Highways Agency is responsible for England's network of motorways and major trunk roads and its work is increasingly about managing traffic flow and helping road users to make informed choices about their journeys. HAIL provides essential information to help people plan ahead and report any problems en route. It operates as a help desk or customer contact centre and services more than 165,000 enquiries per year.

Nuclear Decommissioning Authority

Grontmij has renewed a framework agreement to provide a range of technical support services to the Nuclear Decommissioning Authority. The framework is initially for a 24 month period, with a further 24 month option to extend. Grontmij is supported by ESR Technology.

Follow our Lead

A team from Grontmij recently took part in the Times Leadership Challenge; a unique competition designed to develop leadership, motivation and management skills in a controlled yet stimulating environment. Having reached the gruelling 24 hour long semi-finals, the team were challenged to develop product design, manufacturing, marketing and advertising strategies for a product to be sold on the international market.

The team also took part in a sponsored space hopper endurance test around Roundhay Park in Leeds, raising over £800 for Challenge Africa. Despite narrowly missing out on a place in the final, judges praised 'Grontmij's overall team and



Judges praised the Grontmij team for their energy and individual and collective performances

individual consistency, energy and ability to move up a level each time.'

Amy Henstock, environmental consultant for Grontmij, said, "Working in a multi-disciplinary engineering consultancy, we are accustomed to developing collaborative, innovative solutions and the Times Leadership Challenge was a fantastic way to put our skills to the test. Although we didn't make it to the final, we feel very proud to have taken part and to have raised money for a very worthwhile charity."

[E craig.harrison@grontmij.co.uk](mailto:craig.harrison@grontmij.co.uk)



Continue Dialogue over email?

If you would prefer to receive the Dialogue newsletter electronically, please email us at dialogue.newsletter@grontmij.co.uk

